



PUPPENSPIELER-JAZZKANTINE

WWW.SASCHA-KAISLER.DE

GROOVES & IDEEN

WWW.CREATIVE-DRUMSCHOOL.DE

TEMPO: VIERTEL = 87 FEELING: SHUFFLED 16TH

SASCHA KAISLER

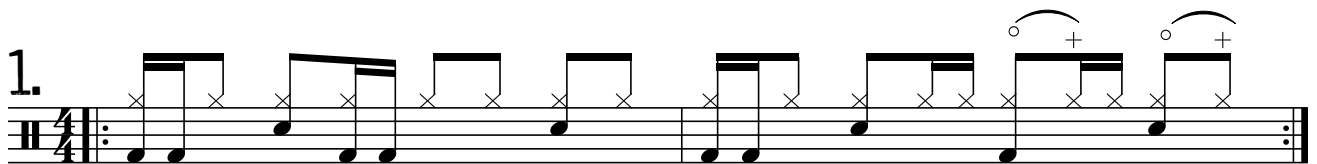
16TH SHUFFLE FEEL



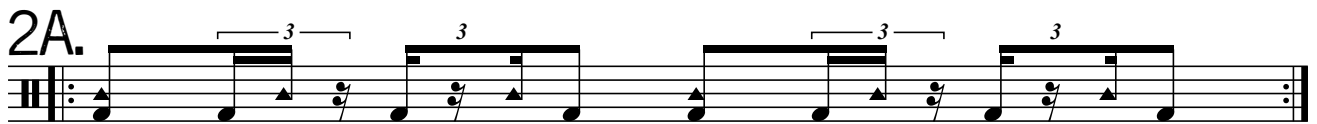
Drum Set



MAINGROOVE - STROPHE

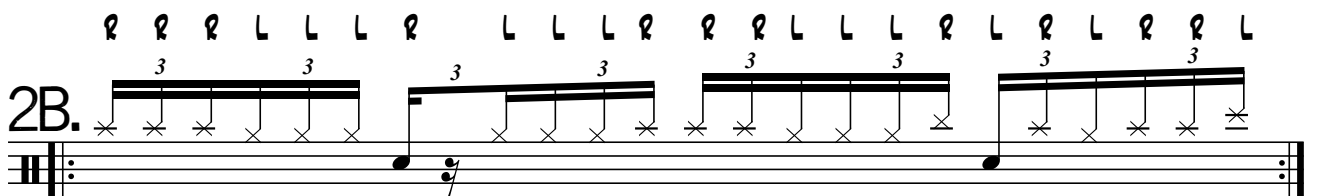


GROOVE - REFRAIN "FÜSSE" - 3 GEGEN 4



80=ÄCHTELNOTEN - DIE 4 SCHLÄGE & DIE FUSSGLOCKE JEDE 4. SECHZEHNTELTRIOLE = 3 SCHLÄGE

GROOVE - REFRAIN "HÄNDE"



GROOVE - REFRAIN "HÄNDE & FÜSSE"

2C.

Musical notation for 2C. Groove - Refrain "Hände & Füße". It consists of two staves. The top staff features a series of eighth notes with asterisks, grouped into four triplets. The bottom staff shows a bass line with eighth notes and triplets, including a triplet of eighth notes.

BLÄSERLINE UND KICKS - TRICKY!

KOMPLETT AUSNOTIERT

3

Musical notation for Bläserline und Kicks - Tricky!. It consists of four systems, each with two staves. The top staff contains eighth notes with asterisks, often grouped into triplets, and includes accents (>) and slurs. The bottom staff contains a bass line with eighth notes, triplets, and rests. The word "FILL" is written above the final system.

The piano accompaniment consists of three systems of two staves each. The first system contains 8 measures, the second 8 measures, and the third 8 measures. The notation features a variety of rhythmic patterns, including triplets, eighth notes, and sixteenth notes. Some notes are marked with an asterisk (*). The third system concludes with a 'FILL' bracket over the final two measures. The piece ends with a double bar line and a 4/4 time signature.

DRUMNOTATION

The drum notation is written on a single staff in 8/4 time. It includes the following components:

- HIHAT**: Indicated by a downward-pointing 'x' symbol.
- RIDE**: Indicated by a downward-pointing asterisk symbol.
- 2. HIHAT RECHTS**: Indicated by a downward-pointing double asterisk symbol.
- SNARE**: Represented by a quarter note.
- GHOSTNOTE**: Represented by a dotted quarter note.
- BD**: Represented by a quarter note.
- TOM 1**: Represented by a quarter note.
- FUSSGLOCKE**: Represented by a quarter note.

The notation concludes with a double bar line and a 4/4 time signature.

