



WWW.SASCHA-KAISLER.DE  
WWW.CREATIVE-DRUMSCHULE.DE

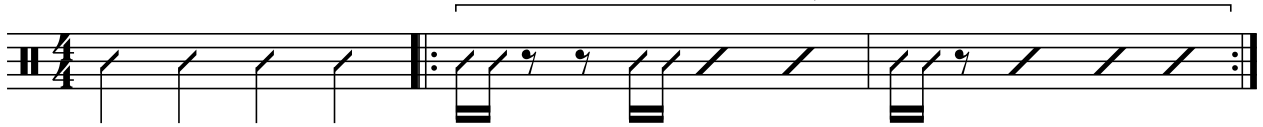
# PUPPENSPIELER - RHYTHM CHART

TEMPO: VIERTEL = 87 FEELING: SHUFFLED 16TH

SASCHA KAISLER

## EINZÄHLER

### GROOVE



## BLÄSERLINIE UND KICKS

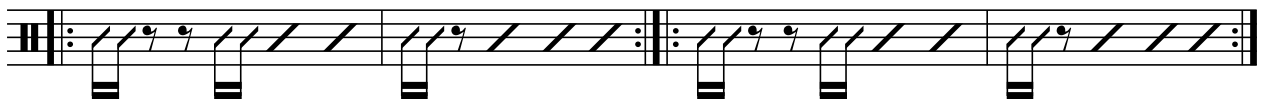


## STROPHE 1

8x's

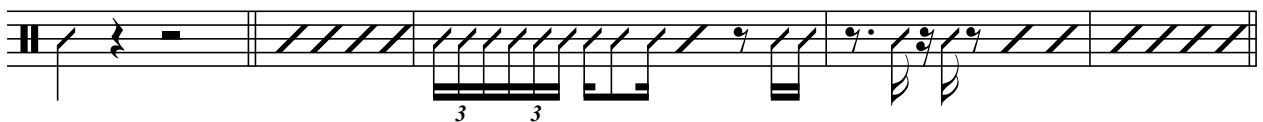
## REFRAIN 1

1./2./3.



## BLÄSERLINIE UND KICKS

4.

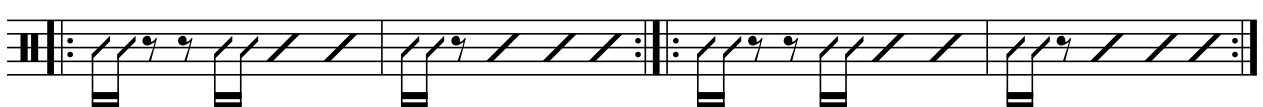


## STROPHE 2

4x's

## REFRAIN 2

1./2./3.



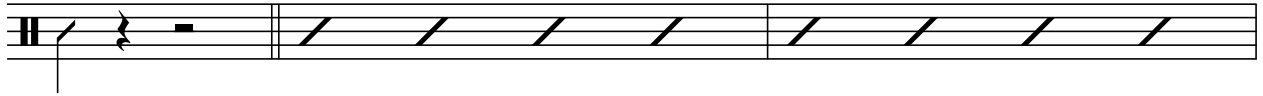
Puppenspieler  
- Rhythm Chart

PIANO SOLO

8x's

2+2+2+1x's


4.



A musical staff with a treble clef. The first measure contains a whole rest. A bracket above the first measure is labeled '4.'. The second and third measures contain slurs, indicating repeated rhythmic patterns.

REFRAIN 3

1./2./3.



A musical staff with a treble clef. A bracket above the first three measures is labeled '1./2./3.'. The first measure has a quarter note, the second a quarter note, and the third a quarter note. The fourth measure has a quarter note followed by a slur. The fifth measure has a quarter note followed by a slur. The sixth measure has a quarter note followed by a slur. The word 'BASS' is written below the first measure.

4.



A musical staff with a treble clef. A bracket above the first four measures is labeled '4.'. The first measure has a quarter note, the second a quarter note, the third a quarter note, and the fourth a quarter note. The fifth measure has a quarter note followed by a slur. The sixth measure has a quarter note followed by a slur. The seventh measure has a quarter note followed by a slur. The eighth measure has a quarter note followed by a slur.